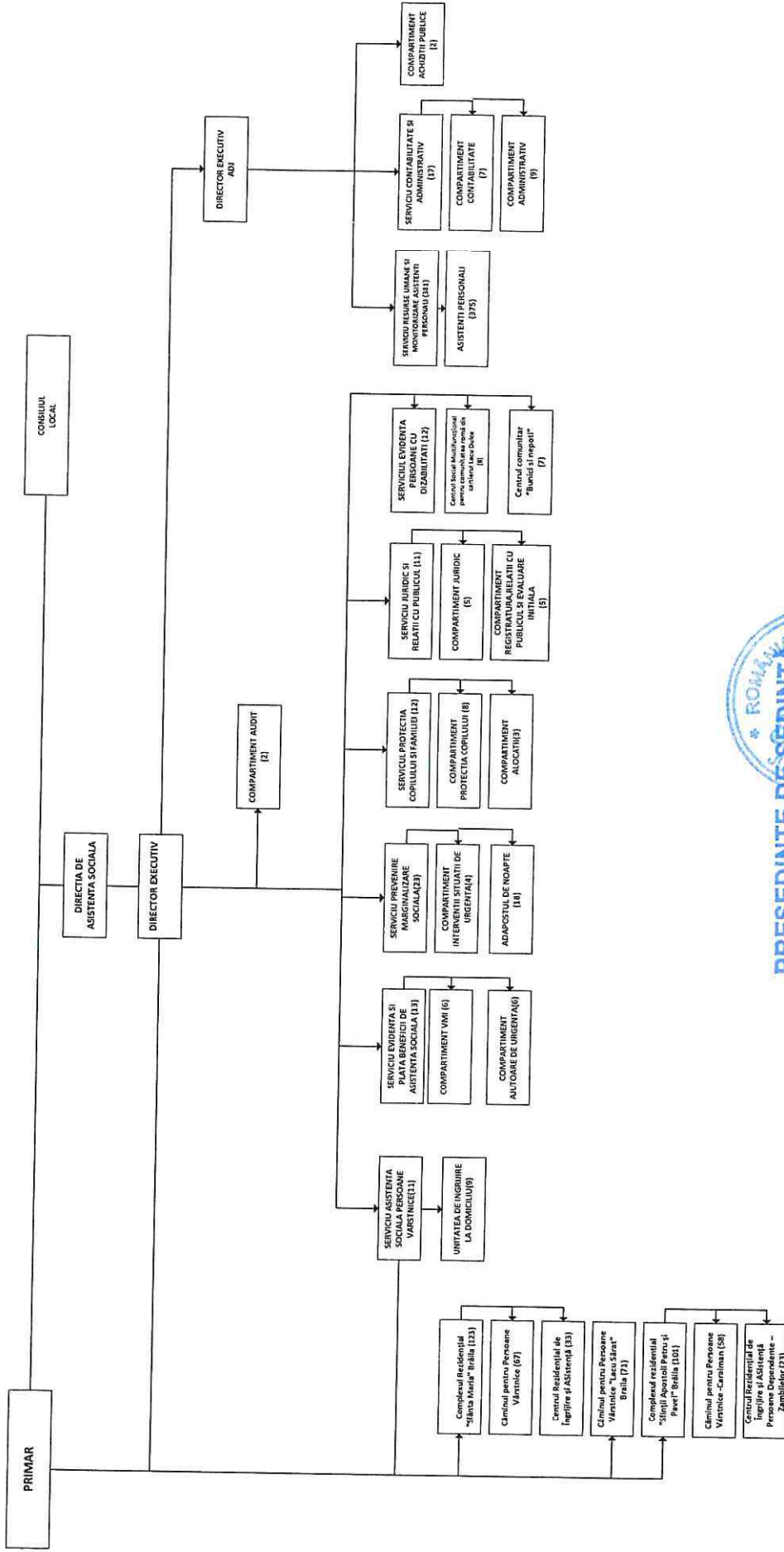


ANEXA NR. 1  
LA HELM NR. 330 M. 06 2024

Organigrama Direcției de Asistența Socială Braila



TOTAL Personal: 510  
 Functii publice: 81  
 F. conducere: 10  
 F. executie: 171  
 Personal contractual: 429  
 Personal salarizat: 34  
 Conducere: 14  
 Executie: 50-49+1\*  
 Asistenti personal: 375  
 (\* = post % norma)



DIRECTOR  
NICOLETA MIHAELA OANCEA